

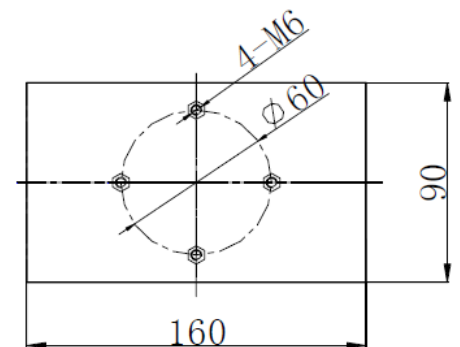
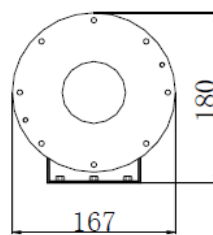
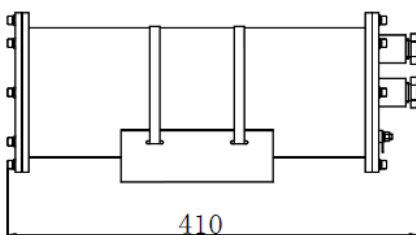
## MINING FLAMEPROOF CAMERA



- ✚ Ex mark: Exd I, MA
- ✚ Applicable to Zone 1 atmosphere especially for mine
- ✚ IP68
- ✚ 304 stainless steel and carbon steel optional
- ✚ Polished finish appearance (plastic-spraying after carbon steel DACROMET is used)
- ✚ Built-in ultra-low illumination camera and lens
- ✚ Setting infrared lamp inside to make up for illumination insufficiency under mine
- ✚ Central position of camera CCD adjustable
- ✚ Unique design of opening caps on both sides for debug and maintenance

- ✚ Mining ex camera is designed for use in Zone1 atmosphere such as gas group-I (typical gas vapours: methane and mash gas etc.) as well as underground parts of mines in need of surveillance. Infrared lamp could be equipped inside to meet the requirement of surveillance under the mine of low illumination. The camera adopts optical transceiver, CCD components, tight shot, electric zoom lens and pilot signal transmitted by optical fiber cable.

### OUTLINE DIMENSION AND INSTALLATION DRAWING OF BASE





FST-127B6	
<b>Certification Parameter</b>	
Configuration Mode	Explosion-proof plane configuration with removable front and back caps
Explosion-proof Mark	Exd I , MA
Operating Temperature(°C)	-25~60
Relative Humidity	≤95% (+25°C)
Cable Entries	2×G3/4"Explosion-proof cable entries , Dia. of inner hole Φ14
<b>Mechanical Features</b>	
Material	Carbon steel / Stainless steel (304)
Outside Dimensions	420×297×167
Inside Dimensions (mm)	Φ300×75×80
Sight Glass Dimensions	Φ75
Weight (Kg)	13
<b>Performance Parameter</b>	
Camera Parameter	Monochrome , 1/3"CCD , lowest degree of illumination 0.0005LUX , 570TVL
Lens Parameter	1/3"CCD; 3.5-8mm manual/automatic aperture lens
Power Supply Module	IN AC86V~265VAC , OUT DC12V 1.2A
Power Supply	Voltage(V) 86V~265VAC
Current (A)	< 0.3
luminescent Source	Optional