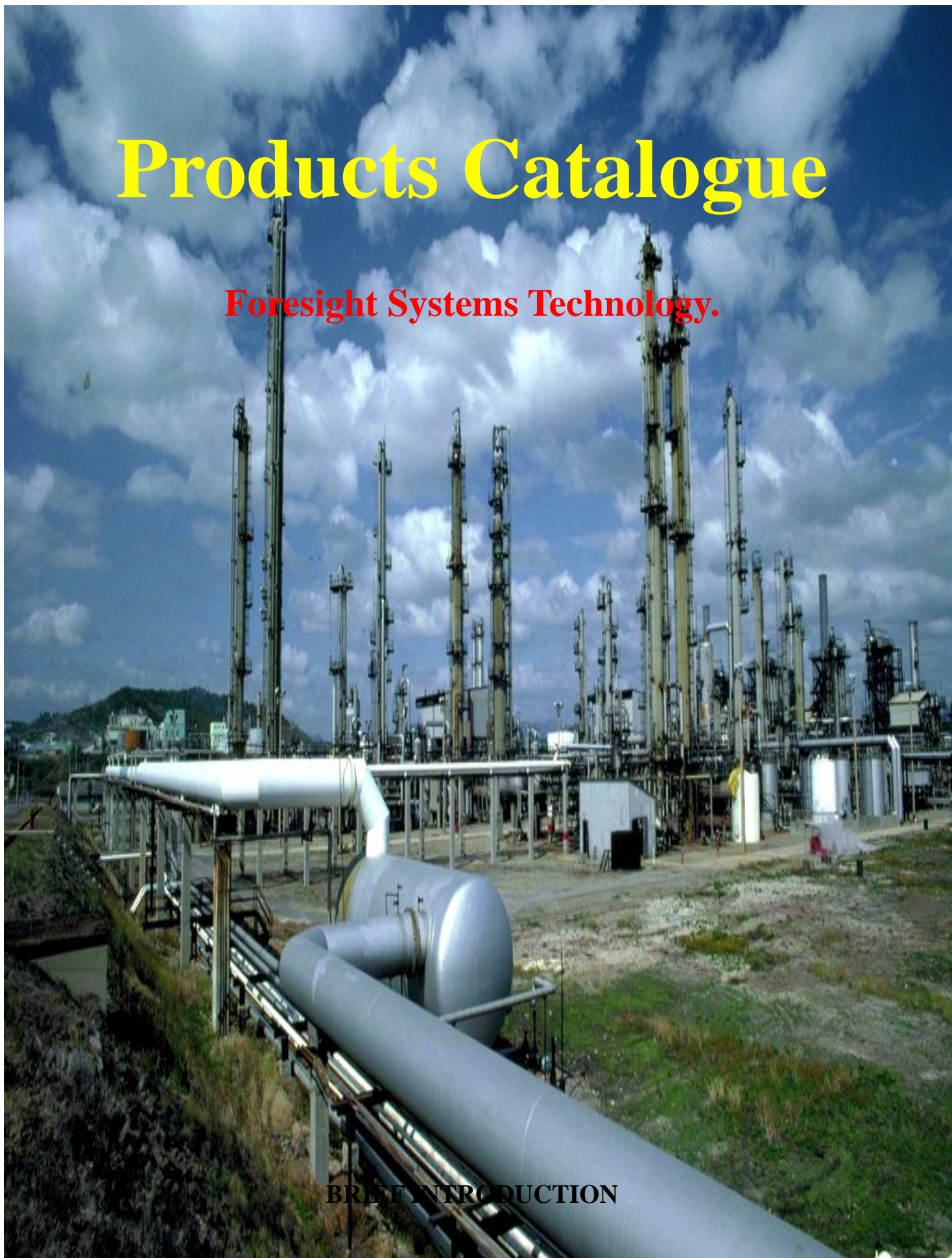


Products Catalogue

Foresight Systems Technology.

BRIEF INTRODUCTION



Foresight Systems Technology

Foresight Systems Technology. is a high-tech manufacturer which integrates R&D production, marketing and service in CCTV field. Established in 2001, FORESIGHT has been in the van of the same line in China through years of development.

Currently, our product range includes Ex High-Speed Dome Camera、 Ex PTZ System、 Ex Camera Housing、 Ex Decoder Box、 Ex Pan/Tilt、 Infrared lamp and Mining Ex Camera, all of which obtained Ex certifications of different rates (covering Ex group- I、 Ex gas group- IIC and dust-ignition-proof mode) and MA. Our products are mainly applied in such hazardous environment as petrochemical industry、 defense industries、 mine、 grain processing industry etc.. And successfully applied in refinery projects. To direct at the environment with aggressive gas and high temperature, our company developed and launched heat resistant camera housing and corrosion-proof camera housing. By the advantages of seriation, large quantity, standardization of production and good cost performance, our products have been supported by market and widely used in all related industries.

Since FORESIGHT was established, it has always been aimed at Chinese first brand for Ex CCTV and similar products in the world market and being geared to international standard. Based on qualified personnel and technique, Foresight speeds up creation to promote products into higher application field and serves clients all over the world. Moreover, FORESIGHT devotes to group cooperation, sticks to prestige and keeps pace with the times. Through betting on improving product performance and continuous multimode win-win market, FORESIGHT is moving unswervingly in the direction of becoming the leader in the same business line.

EXPLOSION-PROOF EQUIPMENT SERIES

FST-S3136B6 / FST-S3026B6 EXPLOSION-PROOF HIGH-SPEED DOME CAMERA (FLAMEPROOF/DUST-IGNITION-PROOF)

DESCRIPTION

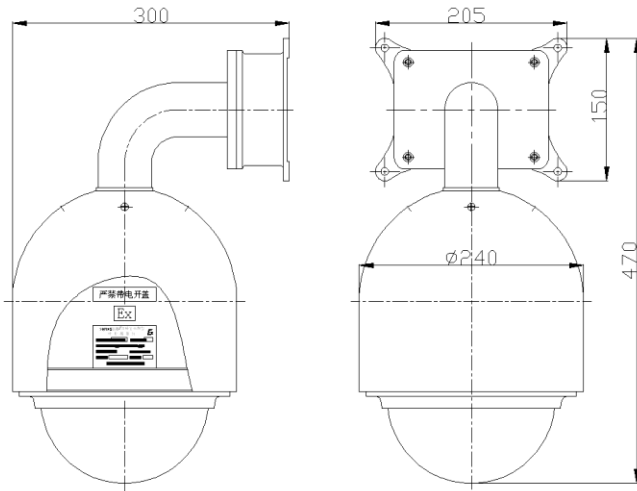
FST-S3136B6 / FST-S3026B6 Explosion-proof High-speed Dome Camera is designed to protect camera against explosive atmosphere relating to gas group IIC (typical gas vapours: hydrogen, acetylene, ethene, coke-oven gas and methyl ether etc.) as well as flammable dust in accordance with IEC60079, IEC21641, GB3836-2000 and GB12476.1-2000 standard. Dome camera has integrated internal structure with compact circuit design and little heat release for operation in high temperature. Based on high integration, It achieves functions of High-speed tracking, 360° endless rotation, 180 auto flips, random scan, pattern track memory and On-Screen-Display menu etc ..The Pan/Tilt adopts stable step motor driving to achieve accurate image catching and multi speed ability, suitable for monitoring large areas. As the high-end surveillance product, it has powerful functions, stable operation and easy installation with good cost performance.



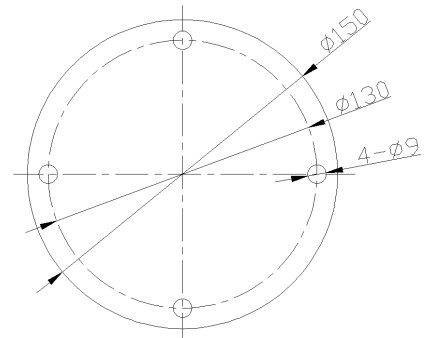
PRODUCT FEATURES

- Dual stainless steel design, good for heat release
- Omni-directional Pan/Tilt has stable operation, without dithering and noises
- Integrated multi protocol decoder controller
- Dome enclosure adopts GE aerospace materials to achieve 99% above light transmittance; Fit for all kinds of atmosphere; More than 10 years' design lifetime
- Embed in TVS surge and lightning protector to prevent pulse signal attack
- Optional quickfit interface, with hot plug function
- Electric conduction link with ALPS structure to attain 10,000,000 rpm service life
- Compatible with almost all the controlling devices such as DVR, matrix etc.
- Running track memory function: can memory a certain PTZ operate process within 40s, no data lost during power shortage
- Auto-reposition, Soft-address edit, Long focus speed limited, Alarm function

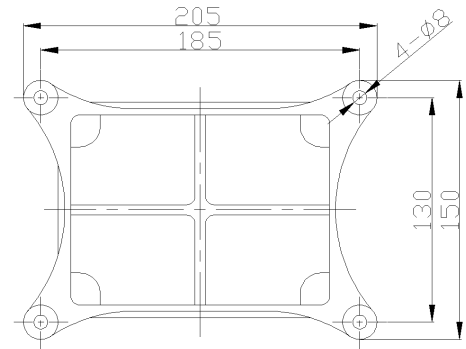
OUTLINE DIMENSION AND INSTALLATION DRAWING



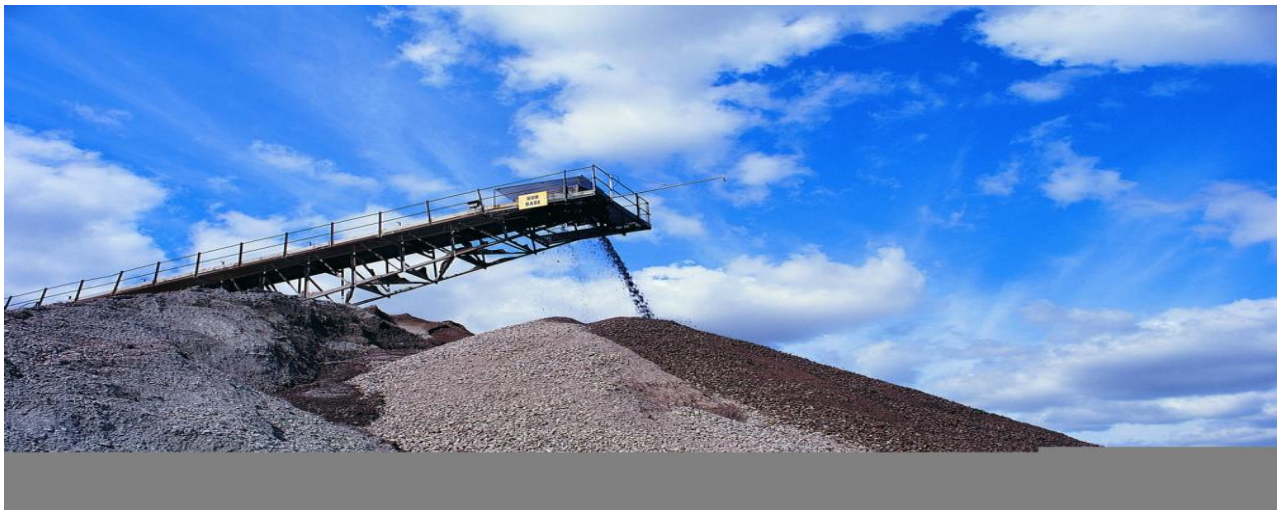
OUTLINE DIMENSION



CEILING MOUNT DIMENSION



WALL MOUNT DIMENSION



TECHNICAL DATA

Model	FST-S3136B6 / FST-S3026B6
Certification Parameter	
Manufacturers Standard	IEC60079, IEC21641, GB3836-2000, GB12476.1-2000
Material	304 / 316 / 316L Stainless steel
Configuration Mode	Integrated Dome Shape
Explosion-proof Mark	Exd II CT6 / DIP A20 TA,T6
IP	IP68
Operating Temperature	-45°C ~ 60°C
Humidity	≤95%
Cable Entries	1 × G3/4" Explosion-proof cable entry , Dia. of inner hole Φ15
Mechanical Features	
Back Box Material	304 / 316 / 316L Dual stainless steel
Electric Motor	MAE Accurate step motor, Preset resolution 0.02°
Transmission Structure	Electric conduction link, High strength aluminum alloy (LY12) gear with synchronous belt
Weight	12 Kg
Control Mode	
Communication	Multi-protocol (PELCO-D, PELCO-P etc.), RS485
Address Range	1-255 (Soft address edit)
Bit Rate	2400 / 4800 / 9600 bps
OSD	On / Off, English Menu, Chinese characters overlapping
Pan/Tilt	
Preset Positions	128
Tour (SEQ)	8 Tours (Each tour with 16 / 8 presets, preset speed and dwell time can be set)
Auto Pan	8 P2P tours (between 2 presets)
Pan / Tilt Range	Pan: 360° Continuously; Tilt: -2° ~ 90° (180° Auto Flips)
Pan / Tilt Speed	Pan: 0.2° ~ 240°/s (continuous control); Tilt: 120°/s; Auto Pan: 25°/s
Alarm	8 Alarm inputs、2 Auxiliary outs
Camera	
Optional Camera	SONY、HITACHI、SAMSUNG、LG、CNB、YOKO All-in-one camera module
Power Supply	
Voltage	12V DC / 220V AC
Current	2A / 0.5A

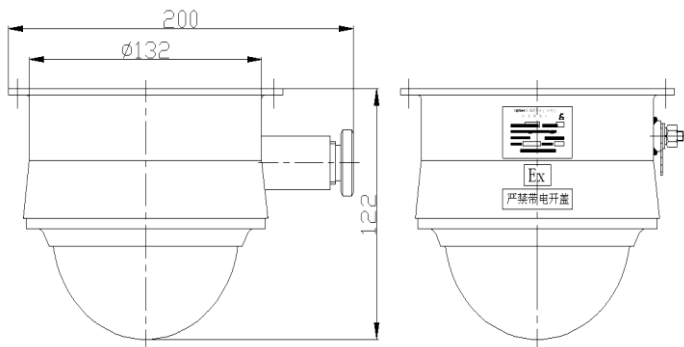
FST-M3128B6 / FST-M3028B6 EXPLOSION-PROOF DOME CAMERA (FLAMEPROOF/DUST-IGNITION-PROOF)

DESCRIPTION

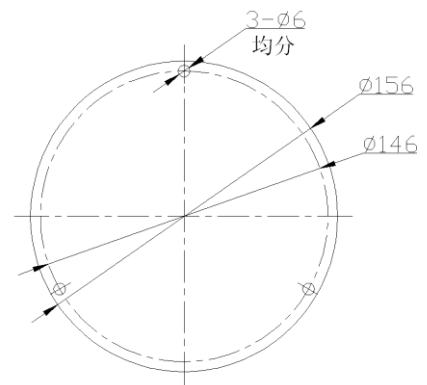
FST-M3128B6 / FST-M3028B6 Explosion-proof Dome Camera is designed to protect camera against explosive atmosphere relating to gas group IIC (typical gas vapours: hydrogen, acetylene, ethene, coke-oven gas and methyl ether etc.) as well as flammable dust. The stainless steel dome housing with aerospace material could resist 1.5KG impact in compliance with highest protection grade IP68, which is ideal for high security and hazardous environment applications; It integrates color CCD sensor and optional lens Computar 2.8-12mm, which can be manually adjusted to monitor other directions. With smart shape, the camera is easy to install into any indoor / outdoor application.



OUTLINE DIMENSION AND INSTALLATION DRAWING



OUTLINE DIMENSION



MOUNTING DIMENSIONAL DRAWING



TECHNICAL DATA

Model	FST-M3128B6 / FST-M3028B6			
Certification Parameter				
Manufacturers Standard	IEC60079, IEC21641, GB3836-2000, GB12476.1-2000			
Configuration Mode	Integrated Dome Shape			
Explosion-proof Mark	Exd II CT6 / DIP A20 TA,T6			
IP	IP68			
Operating Temperature	-45°C ~ 60°C			
Humidity	≤95%			
Cable Entries	1 × G1/2" Explosion-proof cable entry , Dia. of inner hole Φ14			
Mechanical Features				
Material	304 / 316 / 316L (stainless steel)			
Weight	2.75 Kg			
Camera				
CCD Sensor	1/3" SONY CCD HITACHI DSP			
TV System	NTSC		PAL	
Horizontal Frequency	15.734kHz		15.625kHz	
Vertical Frequency	59.94Hz		50.00Hz	
Pixel	(H)510 × (V)592		(H)500 × (V)582	
Horizontal Resolution	420 TVL		540 TVL	
Mini. Illumination	0.005Lux of F1.2	0.00045Lux of F1.2	0.005Lux of F1.2	0.00045Lux of F1.2
Scan	2:1 Interlace Scan			
Sync. System	Internal			
Manual Zoom	2.8~12mm			
White Balance	Auto / Manual			
Iris	Auto Iris; Control: Video Drive / Electronic Shutter / DC Drive			
S/N Ratio	Min. 50 dB / Max.60 dB (AGC shut)			
Video Output Level	Combined & Separated image signal output, 1.0 Vp-p (75Ω)			
AGC	Max. +18 dB			
Electronic Shutter	1/60 (1/50)~1/120000 sec			
Power	12V ± 1V DC, 90mA			
Power Supply				
Voltage	12V DC / 220V AC			
Current	2A / 250mA			

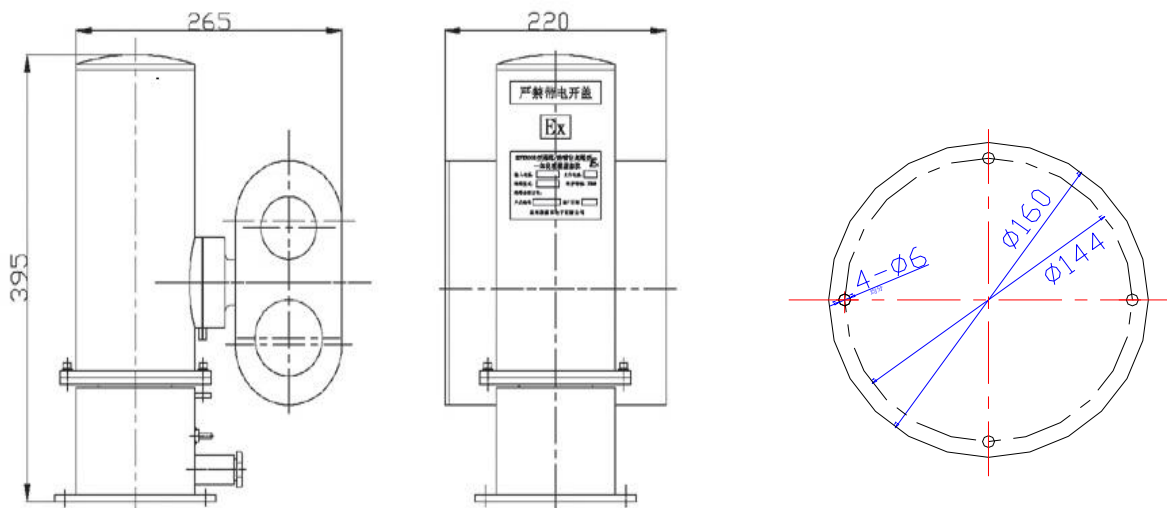
FST-RD3126B6 / FST-RD3026B6 EXPLOSION-PROOF LASER NIGHT VISION PTZ CAMERA SYSTEM (FLAMEPROOF/DUST-IGNITION-PROOF)

DESCRIPTION

Explosion-proof Laser Night Vision PTZ Camera System is designed to protect camera against explosive atmosphere relating to gas group IIC (typical gas vapours: hydrogen, acetylene, ethene, coke-oven gas and methyl ether etc.) as well as flammable dust. It combines with laser camera to realize the interlock preset positioning of camera system and laser system. The radiation distance is up to reach 300m at large. It is ideal for the night, hazardous environments and farther range control applications. The outside wash and water tank and all mechanical structure, it has integrated design, compact structure, small shape as well as easy installation and maintenance. With functions of maximum cruise speed of explosion-proof products and characteristic speed change, it has flexible operation and quicker feedback.



OUTLINE DIMENSION AND INSTALLATION DRAWING



TECHNICAL DATA

Model	FST-RD3126B6 / FST-RD3026B6
Certification Parameter	
Manufacturers Standard	GB3836-2000, GB12476.1-2000
Configuration Mode	Integrated configuration without external connection; fixed cable entries
Explosion-proof Mark	Exd IICT6 / DIP A20 TA,T6
IP	IP68
Operating Temperature	-25°C~60°C _{note1}
Cable Entries	1×G1/2"Explosion-proof cable entry , Dia. Of inner hole Φ12
Mechanical Features	
Material	304 / 316 / 316L (stainless steel)
Pan/Tilt Range	360° / ±90°
Pan/Tilt Rotate Speed	Fixed speed (6° ~20°/s) _{note2} / 4°~20°/s adjustable / 0.1°~40°/s adjustable
Electric Motor	The permanent magnetism DC motor of high torque matches the planetary gear reducer of high precision
Transmission Structure	All-gear structure
Weight	18Kg
Built-in Decoder With ZOOM Control	
Communication Interface	RS-485 semiduplex
Communication Protocol	PELCO-D (other protocols replaced according to consumer's demands)
Bit Rate	1200 / 2400 / 4800 / 9600 / 19200
Appliance Performance	
Wave Length	808nm
Irradiation Distance	300 m
Light Power	3 W
Vibration	150m/s ² 5-200Hz
Shock Resistance	150m/s ² 11ms
Power Supply	
Voltage	24V DC / 220V AC
Current	2 / 0.5 A
Others	
Optional、Fitted as standard	Sunshield
Optional	Wash and water tank; Wiper; heater; Preset Positioning; camera

FST-R3126B6 / FST-R3026B6 High-Speed PTZ Camera (Flameproof / Dust-ignition-proof)

DESCRIPTION

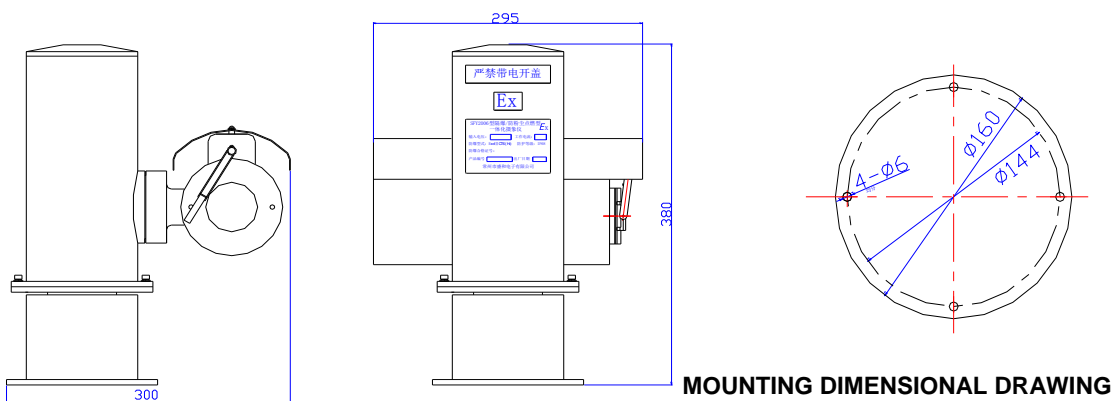
FST-R3126B6 / FST-R3026B6 High-speed PTZ Camera is designed for use in explosive atmosphere such as gas group II C (typical gas vapours: hydrogen, acetylene, ethene, coke-oven gas and methyl ether etc.) as well as flammable dust. With outside wash and water tank and all mechanical structure, it has integrated design, compact structure, small shape as well as easy installation and maintenance. With functions of maximum cruise speed of explosion-proof products and characteristic speed change, it has flexible operation and quicker feedback.



PRODUCT FEATURES

- Explosion-proof mark: ExdIICT6/DIP A20 TA, T6
- Applicable to Zone 0 and dust-ignition environment
- Optional preset positioning and heating capability with outside sprinkler structure
- 316L、316、304 stainless steel optional
- Integrated configuration, built-in multifunctional decoder
- Polished finish appearance, corrosion-proof treated internal parts
- Design and manufacture on GB3836-2000 and GB12476.1-2000 basis
- In accordance with IP68
- Pan rotate speed 45°/s, tilt rotate speed 40°/s
- Small in appearance with only unit weight 16kg
- Compact explosion-proof camera housing and pan/tilt unit
- Its shell and rotational body are electro polished, 316L,316, 304 stainless steel construction that has a corrosion-proof design for both indoor and outdoor installation

OUTLINE DIMENSION AND INSTALLATION DRAWING



TECHNICAL DATA

	Model	FST-R3126B6 / FST-R3026B6
Certification Parameter	Manufacturers Standard	GB3836-2000, GB12476.1-2000
	Configuration Mode	Integrated configuration without external connection; fixed cable entries
	Explosion-proof mark	ExdII CT6 / DIP A20 TA, T6
	IP	IP68
	Operating environment	Below IIC gas group (hydrogen, acetylene, ethene, coke-oven gas, methyl ether etc.) and flammable dust
	Operating temperature	-25°~60°C <small>note1</small>
	Cable entries	1X G1/2" , Dia. Of inner hole φ12
Mechanical Features	Material	304/316/316L stainless steel
	Pan range	360°
	Pan rotate speed	Fixed(6°-20°/s) <small>note2</small> /4°-20°/sadjustable/ 0.1°~40°/s adjustable
	Tilt range	±90°
	Tilt rotate speed	Fixed(6°-20°/s) <small>note2</small> /4°-20°/sadjustable/ 0.1°~40°/s adjustable
	Electric motor	The permanent magnetism electrical motors of high torque matches the planetary gear reducer of high precision
	Transmission structure	All-gear structure with lubricated and corrosion-proof treated inner parts
	Weight	16 kg
Built-in Decoder	Mode	Full-functional Mode <small>note3</small>
	Controlling Device	AVR singlechip with RSIC kernel
	Communication Interface	RS-485 semiduplex
	Communication Distance	1200
	Communication Protocol	PELCO-D (other protocols replaced according to customer's demands)
	Baud Rate	1200 2400 4800 9600 19200
	Preset Points	80
Power Supply	Voltage	24V DC/220V AC
	Current	2/0.5 A
Others	Pump/tank washer system	Optional
	Sunshield	Optional , Fitted as standard <small>note4</small>
	Wiper	Optional
	Heater	Optional
	Preset Positioning	Optional
	Camera	Optional <small>note5</small>
	Cable Requirement	Power supply: 2X1.0 mm ² (24V DC) / 2X0.75 mm ² (220V AC) Communication: Shield 2X0.3 mm ² Video: 75Ω

Note1: Minimum temperature reaches -45°C after heater is used.

Note2: Speed is fixed among 6~20 °/s.

Note3: Basic mode only includes Pan/Tilt rotation、 camera power supply ect.

Note4: Sunshield is fitted as standard if wiper is used.

Note5: Camera is limited by inner dimension. Please consult with us before choosing camera.

Actual index is in accordance with instruction book. Products design and specifications subject to change without notice.

EXPLOSION-PROOF CAMERA HOUSING (FLAMEPROOF / DUST-IGNITION-PROOF)



FST-1831HB6 / FST-1830HB6



FST-CPA31B6/FST-CPA30B6



FST-CPS31B6/FST-CPS30B6

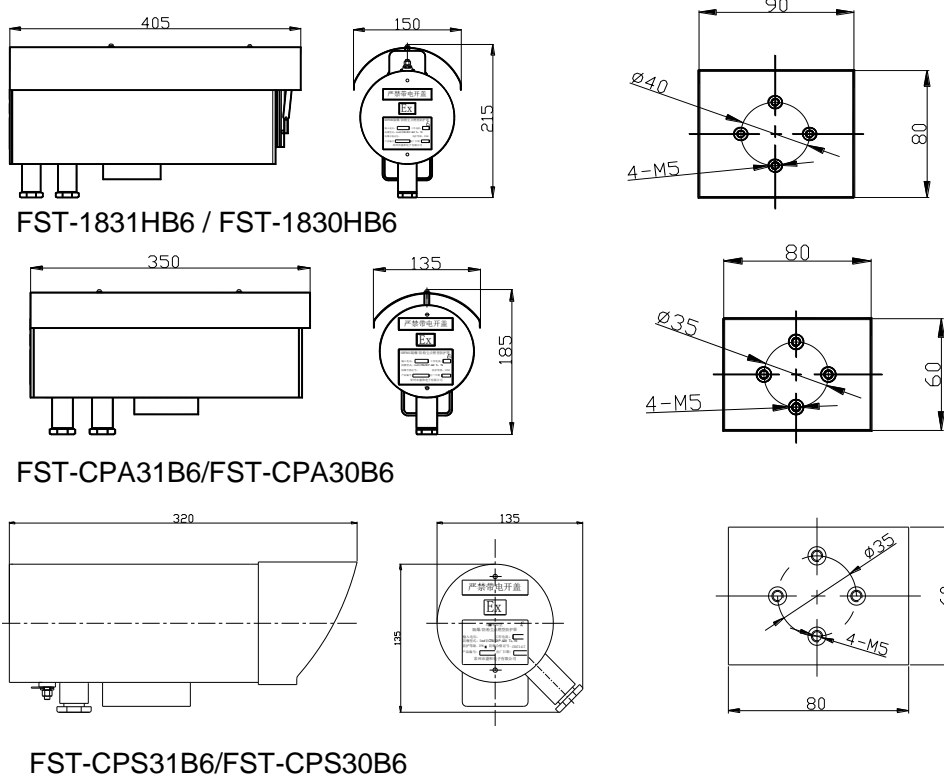
DESCRIPTION

Explosion-proof Camera Housing is designed for use in explosive atmosphere such as gas group II C (typical gas vapours: hydrogen, acetylene, ethene, coke-oven gas and methyl ether etc.) as well as flammable dust. The housing is designed to prevent explosion by containing any heat, sparks or flames generated. This prevents potentially explosive atmosphere or materials outside the equipment ignited. FST-1831HB6 / FST-1830HB6 is equipped with wiper to keep the glass clean. It accommodates most camera / lens combinations with sunshield and wiper matched. It transmits real-time video and on-the-spot scanning, with functions of real-time video storage and remote on-line transmission etc..

PRODUCT FEATURES

- Explosion-proof mark: ExdIICT6/DIP A20 TA, T6
- Applicable to Zone 0 and flammable dust atmosphere
- 316L、316、304 stainless steel and carbon steel optional
- Polished finish appearance (plastic-spraying after carbon steel DACROMET is used) , corrosion-proof treated internal parts
- Optional sunshield、wiper、defroster for lens and heating capability
- Indoor / Outdoor applications
- Design and manufacture on National GB3836-2000, GB12476.1-2000 basis
- In accordance with IP68
- Unit weight 10kg/6kg/4kg
- Heater works automatically to keep proper temperature of inside of the housing by built-in sensor

OUTLINE DIMENSION AND INSTALLATION DRAWING



TECHNICAL DATA

Model	FST-1831HB6 / FST-1830HB6	FST-CPA31B6/ FST-CPA30B6	FST-CPS31B6/ FST-CPS30B6
Certification Parameter			
Manufacturers Standard	GB3836-2000, GB12476.1-2000		
Configuration Mode	front and rear caps with threaded flameproof joints		front cap with epoxide resin embedded and rear cap with thread
Explosion-proof Mark	Exd IICT6 / DIP A20 TA, T6		
IP	IP68		
Operating Temperature	-25-60°C _{note}		
Cable Entries	2×G1/2" Explosion-proof cable entries, Dia. of inner hole Φ12		1×G1/2" Explosion-proof cable entry , Dia. of inner hole Φ13
Mechanical Features			
Material	Carbon steel / Stainless steel (304/316/316L)		
Wiper	Inside	No	No
Sight Glass Dimensions	Φ75 mm	Φ67 mm	Φ90 mm
Outside Dimensions	405×165×215	350×150×165	320×135×135
Inside Dimensions	Φ125×330 mm	Φ112×300 mm	Φ100×211 mm
Weight	10 Kg	6 Kg	4 Kg

Built-in Decoder			
Controlling Device	AVR singlechip with RSIC kernel	NO	
Controlling Device	Switch Signal		
Voltage	12V DC		
Current	300 A		
Voltage	12VDC/24VDC/220VAC	12VDC/24VDC/220VAC	12VDC/220VAC
Current	1 A / 0.5 A / 0.1 A	1 A / 0.5 A / 0.1 A	1 / 0.1 A
Others			
Sunshield	Fitted as standard	Optional	
Optional	power supply module, Inner heating		
Cable requirement	Power supply: 2X1.0 mm ² (24V DC) / 2x0.75 mm ² (220V AC) Communication: Shield 2X0.75 mm ² Video: 75Ω		

Note1: Minimum temperature reaches -45°C after heater is used.

Actual index is in accordance with instruction book. Products design and specifications subject to change without notice.

FST-CDA31B6/FST-CDA30B6 EXPLOSION-PROOF CONTROL BOX (FLAMEPROOF / DUST-IGNITION-PROOF)

DESCRIPTION

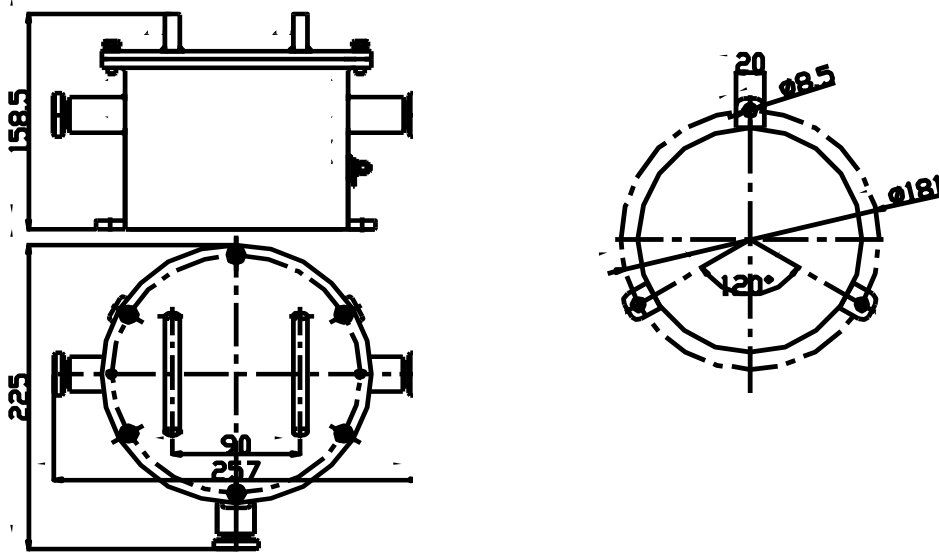
FST-CDA31B6/FST-CDA30B6 Explosion-proof Control Box is designed for use in explosive atmosphere such as gas group II C (typical gas vapours: hydrogen, acetylene, ethene, coke-oven gas and methyl ether etc.) as well as flammable dust. It is the remote front-end device that provides pan/tilt, camera's lens aperture, zoom / focus and miscellaneous function control by matching monitoring host computer and decoding monitoring host computer's signal.



PRODUCT FEATURES

- Explosion-proof mark: ExdIICT6/DIP A20 TA, T6
- Design and manufacture on National GB3836-2000 GB12476.1-2000 basis
- Applicable to Zone 0 and flammable dust atmosphere
- In accordance with IP68
- Optional Decoder , Optional Preset positioning function
- Polished finish appearance (plastic-spraying after carbon steel DACROMET is used)
- 316L、316、304 stainless steel and Q235A carbon steel optional
- Indoor / Outdoor applications
- Unit weight 4.5kg
- High certification and moderate price

OUTLINE DIMENSION AND INSTALLATION DRAWING



TECHNICAL DATA

Model		FST-CDA31B6/FST-CDA30B6
Certification Parameter	Manufacturers Standard	GB3836-2000, GB12476.1-2000
	Configuration Mode	Explosion-proof spigot joints
	Explosion-proof mark	ExdII CT6/DIP A20 TA, T6
	IP	IP68
	Operating environment	Below IIC gas (hydrogen, acetylene, ethene, coke-oven gas, methyl ether etc.) and flammable dust
	Operating temperature	-25°~60°C <small>note1</small>
	Relative Humidity	≤95% (+25°C)
	Cable entries	3×G1/2" Ex-cable entries , inner hole Dia.φ12
Mechanical Features	Material	Carbon steel / Stainless steel (304/316/316L)
	Dimensions (L×W×H)	260×225×160 mm
	Inside dimensions	φ149×110 mm
	Weight	4.5 kg <small>note2</small>
Built-in Decoder	Mode	Basic mode
	Controlling Device	MS-51 Singlechip
	Communication Interface	RS-485 Half Duplex
	Communication Distance	1200
	Communication Protocol	PELCO-D (other protocols replaced according to customer's demands)
Power	Baud Rate	2400 4800 9600 19200
	Voltage	24V DC/220V AC

supply	Current	2 A / 0.5 A
Others	Decoder	Optional
	Heater	Optional
	Cable requirement	Power supply: 2X1.0 mm ² (24V DC) / 2x0.75 mm ² (220V AC) Communication: Shield 2x0.75 mm ²

Note1: Minimum temperature reaches -45°C after heater is used.

Note2: Decoder weight not included

Actual index is in accordance with instruction book. Products design and specifications subject to change without notice.

FST-RBL31B6/FST-RBL30B6 EXPLOSION-PROOF PAN/TILT

DESCRIPTION

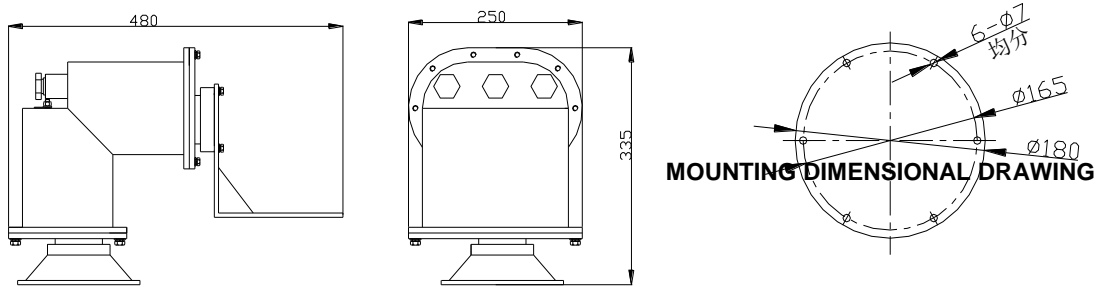
FST-RBL31B6/FST-RBL30B6 Explosion-proof Pan/Tilt is designed for use in explosive atmosphere such as gas group II C (typical gas vapours: hydrogen, acetylene, ethene, coke-oven gas and methyl ether etc.).It is designed according to National standard and is built to IP66 protection level requirement. The pan/tilt has a huge load capacity, smooth rotation, smaller noise and high reliability. It is applicable to industrial and mining enterprises which deal with oil field, petrochemical, coal, and oil vapour disposal.



PRODUCT FEATURES

- Optional AC220V/AC 24V Alternating current electric motor
- 316L、316、304 stainless steel and carbon steel optional
- Optional preset positioning and heating
- Pan range 360°without blind spot for rotate speed 6°/s
- Indoor / Outdoor applications
- In accordance with IP66
- Unit weight 27kg
- Indoor / Outdoor applications

OUTLINE DIMENSION AND INSTALLATION DRAWING



TECHNICAL DATA

	Model	FST-RBL31B6/FST-RBL30B6
Certification Parameter	Manufacturers Standard	GB3836-2000
	Configuration Mode	Explosion-proof rough turning configuration
	Explosion-proof mark	ExdII CT6
	IP	IP66
	Operating environment	Below IIC gas (hydrogen, acetylene, ethene, coke-oven gas, methyl ether etc.)
	Operating temperature	-25~60 <small>note1</small>
	Relative Humidity	≤95% (+25°C)
	Cable entries	3×G3/4" Ex-cable entries , inner hole Dia. Of inner hole φ14
Mechanical Features	Material	Carbon steel / Stainless steel (304/316/316L)
	Pan range	360 °
	Pan rotate speed	6 °/s
	Tilt range	±118 °
	Tilt rotate speed	6 °/s
	Pan driving torque	40 N.m
	Tilt driving torque	60 N.m
	Gear Clearance	±0.3 °
	Electric motor	Alternating current servo
	Transmission structure	Worm wheel, worm, gear structure, with lubricated and corrosion-proof treated inner parts
	Dimensions (L×W×H)	480×250×335 mm
	Weight	27 kg
Power supply	Voltage	24 V DC/220V AC
	Current	2A / 0.5 A
Others	Heater	Optional
	Preset (position detection)	Optional
	Cable requirement	5-core 5×0.75mm ² [driven by pan/tilt electric motor, general (black) above (red) below (white) left (yellow) right (blue)] 4-core shield 4×0.5mm ² [power supply+(red) power

supply-(black) pan signal (yellow) tilt signal (blue)]

Note1: Minimum temperature reaches -45°C after heater is used.

Note2: Cable's color is in accordance with instruction book.

Actual index is in accordance with instruction book. Products design and specifications subject to change without notice.

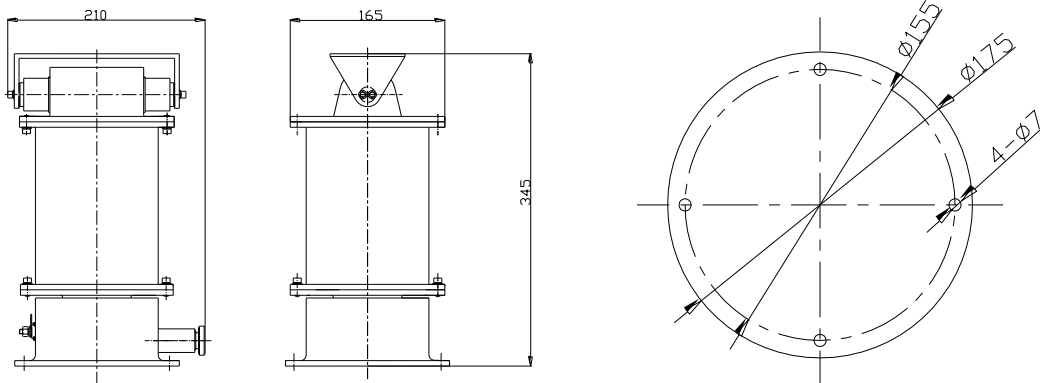
FST-RB31B6/FST-RB30B6 EXPLOSION-PROOF PAN/TILT (FLAMEPROOF/DUST-IGNITION-PROOF)

DESCRIPTION

FST-RB31B6/FST-RB30B6 Explosion-proof Pan/tilt is designed for use in explosive atmosphere such as gas group II C (typical gas vapours: hydrogen, acetylene, ethene, coke-oven gas and methyl ether etc.) as well as flammable dust. It is designed according to National standard and is built to IP68 protection level requirement. The pan/tilt has a huge load capacity, smooth rotation, smaller noise and high reliability. Its built-in decoder controls its rotation, camera lens and wiper. With highest compound explosion-proof certification, it has proper configuration, light weight as well as easy installation and maintenance, providing best safety control.



OUTLINE DIMENSION AND INSTALLATION DRAWING



MOUNTING DIMENSIONAL DRAWING

TECHNICAL DATA

Model	FST-RB31B6/FST-RB30B6
Certification Parameter	
Manufacturers Standard	GB3836-2000, GB12476.1-2000
Configuration Mode	Explosion-proof spigot joints
Explosion-proof Mark	Exd II CT6 / DIP A20 TA, T6
IP	IP68
Operating Temperature	-25°~60°C _{± note}
Relative Humidity	≤95% (+25°Q)
Cable Entries	2× G1/2"Explosion-proof cable entries , Dia. of inner hole Φ12
Mechanical Features	
Material	Carbon steel / Stainless steel (304/316/316L)
Pan/Tilt Range	360° / ±60°
Pan/Tilt Rotate Speed	10 °/s
Pan/Tilt Driving Torque	20 N. m / 30 N. m
Gear Clearance	±0.3°
Electric Motor	The permanent magnetism DC motor of high torque matches the planetary gear reducer of high precision
Transmission Structure	All-gear structure
Outside Dimensions	210×165×345
Weight	11 Kg
Built-in Decoder With ZOOM Control	
Communication Interface	RS-485 semiduplex
Communication Protocol	PELCO-D (other protocols replaced according to consumer's demands)
Baud Rate	1200 / 2400 / 4800 / 9600 / 19200
Power Supply	
Voltage	220V AC
Current	0.5 A
Others	
Optional	Heater

EXPLOSION-PROOF CAMERA HOUSING



FST-CPW31B6/FST-CPW30B6



FST-CPB31B6/FST-CPB30B6



FST-CPR31B6/FST-CPR30B6

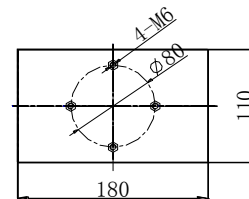
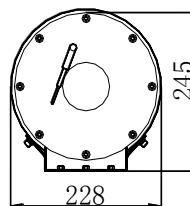
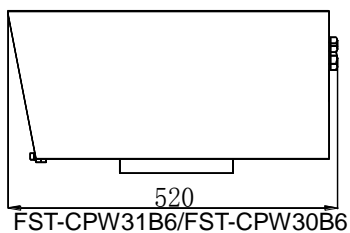
DESCRIPTION

Explosion-proof Camera Housing is designed for use in explosive atmosphere such as gas group II C (typical gas vapours: hydrogen, acetylene, ethene, coke-oven gas and methyl ether etc.). It accommodates most camera / lens combinations with sunshield and wiper matched, after all of which are assembled, it conducts functions of real-time video transmission and on-the-spot scanning, real-time video storage and remote on-line transmission etc.. The camera adopts CCD components and tight shot/electric zoom lens.

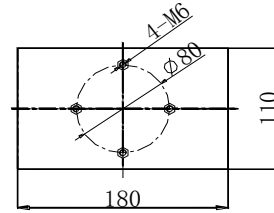
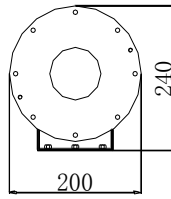
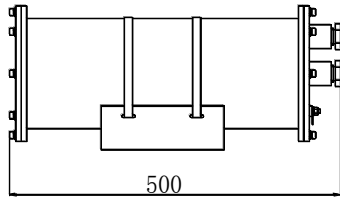
PRODUCT FEATURES

- Explosion-proof mark: ExdIICT6
- Applicable to Zone 0 atmosphere
- 316L、316、304 stainless steel and carbon steel optional
- Polished finish appearance (plastic-spraying after carbon steel DACROMET is used)
- Optional sunshield, wiper, sight glass defroster and heating function
- Unit weight 23kg/17kg/13kg
- Indoor / Outdoor applications
- Design and manufacture on National GB3836-2000 basis
- In accordance with IP66

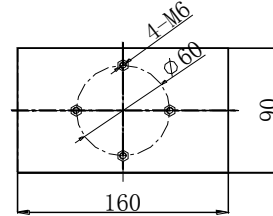
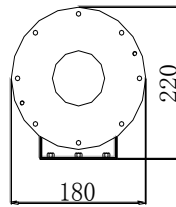
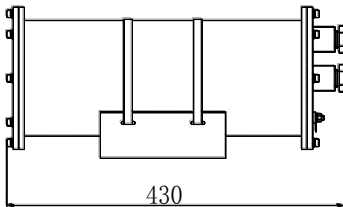
OUTLINE DIMENSION AND INSTALLATION DRAWING



Foresight Systems Technology



FST-CPB31B6/FST-CPB30B6



FST-CPR31B6/FST-CPR30B6

TECHNICAL DATA

Model	FST-CPW31B6/FST-CPW30B6	FST-CPB31B6/FST-CPB30B6	FST-CPR31B6/FST-CPR30B6
Certification Parameter	Manufacturers Standard	GB3836-2000	
	Configuration Mode	Explosion-proof spigot joints configuration with removable front and back caps	
	Explosion-proof mark	ExdIICT6	
	IP	IP66	
	Operating environment	Below IIC gas (hydrogen, acetylene, ethene, coke-oven gas, methyl ether etc.)	
	Operating temperature	-25°~60°C _{note1}	
	Relative Humidity	≤95% (+25°C)	
	Cable entries	3×G3/4" Explosion-cable entries	2×G3/4" Explosion-cable entries
Mechanical Features	Construction	Carbon steel / Stainless steel (304/316/316L)	
	Wiper	Inside	No
	Wiper rotate speed	1 r/s	No
	Electric motor	The permanent magnetism electrical motors with gear reducer	No
	Transmission structure	Lubricated and corrosion-proof all-wheel inner parts	No
	Sight glass	φ75 mm	

Foresight Systems Technology

	dimensions			
	Dimensions (LxWxH)	520x228x245 mm	500x200x240 mm	410x167x180 mm
	Inside dimensions	370x105x110 mm	370x100x100 mm	300x75x80 mm
	Weight	23 kg	17 kg	13 kg
Wiper	Controlling interface	Switch signal	No	
	Voltage	12 V DC	No	
	Current	300 A	No	
Power Supply	Voltage	24V DC/220V AC		
	Current	2 A / 0.5 A		
Others	Window heating	Optional		
	Sunshield	Fitted as standard	Optional	
	Built-in power supply module	Optional		
	Heater	Optional		
	Cable requirement	Power supply: 2X1.0 mm ² (24V DC) / 2x0.75 mm ² (220V AC) Communication: Shield 2X0.75 mm ² Video: 75Ω		

Note1: Minimum temperature reaches -45°C after heater is used.

Actual index is in accordance with instruction book. Products design and specifications subject to change without notice.

FST-CD31B6/FST-CD30B6 EXPLOSION-PROOF DECODER BOX

DESCRIPTION

FST-CD31B6/FST-CD30B6 Explosion-proof Decoder Box is designed for use in explosive atmosphere such as gas group II C (typical gas vapours: hydrogen, acetylene, ethene, coke-oven gas and methyl ether etc.). It is applicable to industrial and mining enterprises which deal with oil field, petrochemical, oil vapour disposal and coal mine. It helps with pan/tilt's movement in four directions and that of lens.

PRODUCT FEATURES

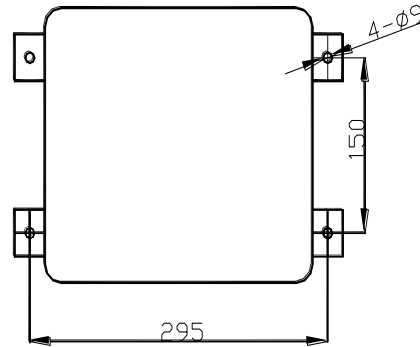
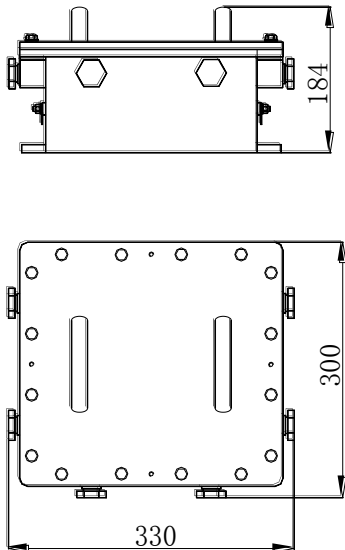
- Explosion-proof mark: ExdIICT6
- Applicable to Zone 0 atmosphere
- 316L、316、304 stainless steel and carbon steel optional
- Polished finish appearance (plastic-spraying after carbon steel DACROMET is used)
- Unit weight 21kg
- Indoor / Outdoor applications
- Design and manufacture on National GB3836-2000



basis

- In accordance with IP66

OUTLINE DIMENSION AND INSTALLATION DRAWING



MOUNTING DIMENSIONAL DRAWING

TECHNICAL DATA

Model		FST-CD31B6/FST-CD30B6
Certification Parameter	Manufacturers Standard	GB3836-2000
	Configuration Mode	Explosion-proof spigot joints
	Explosion-proof mark	ExdII CT6
	IP	IP66
	Operating environment	Below IIC gas (hydrogen, acetylene, ethene, coke-oven gas, methyl ether etc.) and flammable dust
	Operating temperature	-25°~60°C _{note1}
	Relative Humidity	≤95% (+25°C)
Mechanical Features	Cable entries	6×G3/4" Ex-cable entries , inner hole Dia.φ14
	Material	Carbon steel / Stainless steel (304/316/316L)
	Dimensions (L×W×H)	330×300×184 mm
	Inside dimensions	255×225×120 mm
Built-in Decoder	Weight	21 kg _{note2}
	Mode	Basic Mode , Full-functional Mode _{note3}
	Controlling Device	MS-51 singlechip
	Communication Interface	RS-485 semiduplex
	Communication Distance	1200 m
	Communication Protocol	PELCO-D (other protocols replaced according to customer's demands)

Foresight Systems Technology

	Baud rate	2400 4800 9600
Power supply	Voltage	24V DC/220V AC
	Current	2/0.5 A
Others	Decoder	Optional
	Heater	Optional
	Cable requirement	Power supply: 2X1.0 mm ² (24V DC) / 2X0.75 mm ² (220V AC) Communication: Shield 2X0.75 mm ²

Note1: Minimum temperature reaches -45°C after heater is used.

Note2: Decoder's weight not included

Note3: Basic mode only includes Pan/Tilt rotation、camera power supply ect.

Actual index is in accordance with instruction book. Products design and specifications subject to change without notice.

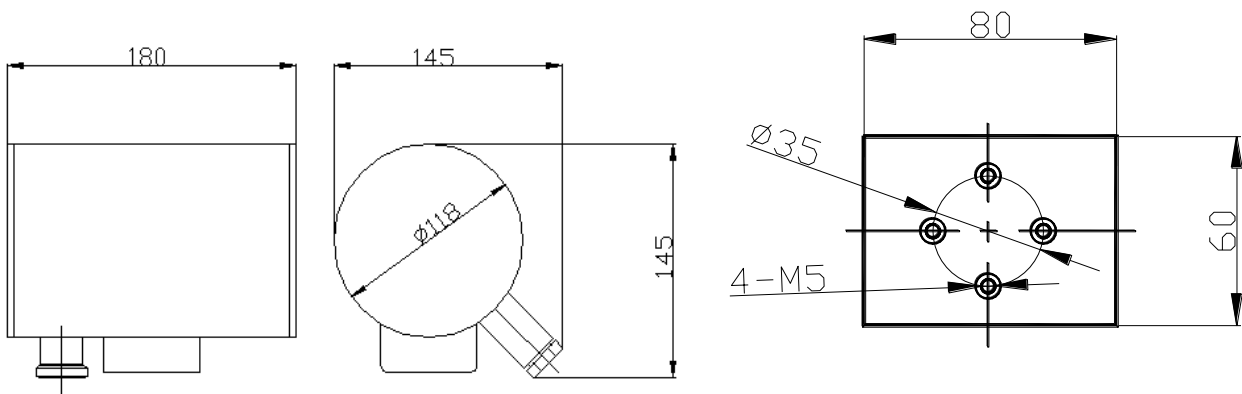
FST-1031ELB6/FST-1030ELB6 EXPLOSION-PROOF INFRARED LAMP (FLAMEPROOF/DUST-IGNITION-PROOF)

DESCRIPTION

FST-1031ELB6/FST-1030ELB6 Explosion-proof Infrared Lamp is designed for use in explosive atmosphere such as gas group IIC (typical gas vapours: hydrogen, acetylene, ethene, coke-oven gas and methyl ether etc.) as well as flammable dust. With camera and lens matched and assembled, it transmits real-time video and on-the-spot scanning in the environment of low illumination, with functions of real-time video storage and remote on-line transmission etc..



OUTLINE DIMENSION AND INSTALLATION DRAWING



MOUNTING DIMENSIONAL DRAWING

TECHNICAL DATA

Model	FST-1031ELB6/FST-1030ELB6		
Certification Parameter			
Manufacturers Standard	GB3836-2000, GB12476.1-2000		
Configuration Mode	front and rear caps with threaded flameproof joints		
Explosion-proof Mark	Exd IICT6/DIP A20 TA,T6		
IP	IP68		
Operating Temperature	-25° ~ 40°C _{note}		
Relative Humidity	≤95% (+25°C)		
Cable Entries	1XG1/2"Explosion-proof cable entry		
Mechanical Features			
Material	Carbon steel / Stainless steel (304/316/316L)		
Outside Dimensions	180×145×145		
Inside Dimensions	Φ112×110 mm		
Weight	3.5 Kg		
Power Supply			
Voltage	220V AC		
Current	0.2 A		
Appliance Performance			
Wave Length	850 nm		
Irradiation Distance	50 m	80 m	100 m

Note: Minimum temperature reaches -45°C after heater is used.

Actual index is in accordance with instruction book. Products design and specifications subject to change without notice.

MINING EQUIPMENT SERIES

FST-100SHB6 MINING FLAMEPROOF CAMERA

DESCRIPTION

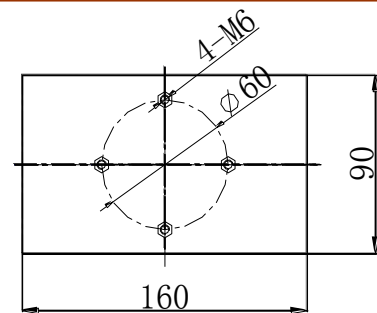
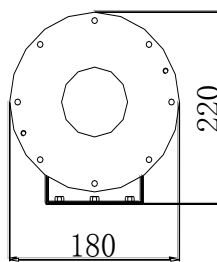
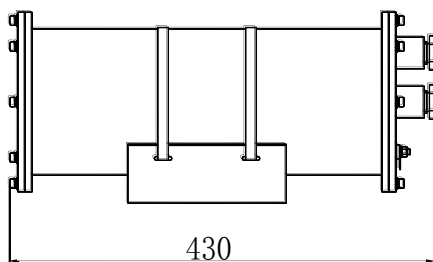
FST-100SHB6 Mining Flameproof Camera is designed for use in Zone1 atmosphere such as gas group- I (typical gas vapours: methane and mash gas etc.) as well as underground parts of mines in need of surveillance. Infrared lamp could be equipped inside to meet the requirement of surveillance under the mine of low illumination. The camera adopts optical transceiver, CCD components, tight shot, electric zoom lens and pilot signal transmitted by optical fiber cable.



PRODUCT FEATURES

- Explosion-proof mark: Exd I
- Design and manufacture on National GB3836-2000 basis
- Applicable to Zone 1 atmosphere especially for mine
- In accordance with IP68
- 304 stainless steel and carbon steel optional
- Unit weight 13kg
- Polished finish appearance (plastic-spraying after carbon steel DACROMET is used)
- Built-in ultra-low illumination camera and lens
- Setting infrared lamp inside to make up for illumination insufficiency under mine
- Central position of camera CCD adjustable
- Unique design of opening caps on both sides for debug and maintenance

OUTLINE DIMENSION AND INSTALLATION DRAWING



TECHNICAL DATA

	Model	FST-100SHB6
Certification Parameter	Manufacturers Standard	GB3836-2000
	Configuration Mode	Flanged flameproof joints with removable front and back caps
	Explosion-proof mark	Exdl , MA
	IP	IP65
	Operating environment	gas group I (methane and mash gas etc.)
	Operating temperature	-25°~60℃
	Relative Humidity	≤95% (+25℃)
	Cable entries	2×G3/4" Ex-cable entries , inner hole Dia.φ14
Mechanical Features	Material	Carbon steel / Stainless steel (304)
	Dimensions (L×W×H)	410×167×180 mm
	Inside dimensions	300×75×80 mm
	Sight glass dimensions	φ75 mm
	Weight	13 kg
Performance Parameter	Camera parameter	Monochrome , 1/3"CCD , lowest degree of illumination
	Optical transceiver parameter	Single mode / multimode, ST interface, single-channel video, wave length 850nm / 1310 nm
	Lens parameter	1/3"CCD, 3.5-8mm manual aperture lens
	Power supply module	IN 86V~265V AV, OUT DC12V 1.2A
Power Supply	Voltage	IN 86~265V AC, OUT DC12V 1.2A
	Current	<0.3 A
Others	Infrared lamp	optional
	Cable requirement	Power supply: 2×1.0 mm ² mine ignition-proof cable signal: 2-core mine ignition-proof optical cable

Actual index is in accordance with instruction book. Products design and specifications subject to change without notice.



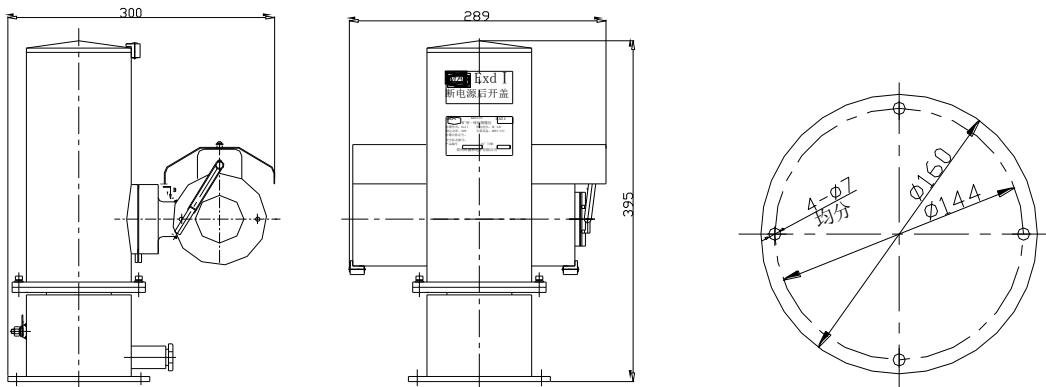
FST-RW30B6 MINING FLAMEPROOF PTZ CAMERA

DESCRIPTION

FST-RW30B6 Mining Flameproof PTZ camera is designed for use in Zone1 atmosphere such as gas group- I (typical gas vapours: methane and mash gas etc.) as well as underground parts of mines in need of surveillance. It adopts camera WAT-902H3 with top quality lens Computar H0614FICS. Its silastic nozzle is suitable for all kinds of atmosphere. The product is equipped with wiper to keep the glass clean. With all mechanical structure, it has integrated design, compact structure, small shape as well as easy installation and maintenance. With functions of speed change, it has more flexible operation and quicker feedback.



OUTLINE DIMENSION AND INSTALLATION DRAWING



MOUNTING DIMENSIONAL DRAWING

Model	FST-RW30B6
Certification Parameter	
Manufacturers Standard	GB3836-2000
Configuration Mode	Integrated configuration without external connection; fixed cable entries
Explosion-proof Mark	Exd I , MA
Operating Temperature	-25°~60°C
Cable Entries	1×G1/2"Explosion-proof cable entry, Dia. of inner hole Φ12

Foresight Systems Technology

Mechanical Features	
Material	304 stainless steel
Pan/Tilt Range	360° / ±90°
Pan/Tilt Rotate Speed	4°~20°C adjustable
Electric Motor	The permanent magnetism DC motor of high torque matches the planetary gear reducer of high precision
Transmission Structure	All-gear structure
Weight	16 kg
Built-in Decoder	
Communication Interface	RS-485 semiduplex
Communication Protocol	PELCO-D (other protocols replaced according to consumer's demands)
Baud Rate	2400 / 4800 / 9600 / 19200
Performance Parameter	
Camera Parameter	Monochrome, 1/2"CCD, lowest degree of illumination 0.0003LUX, 570TVL
Lens Parameter	1/2"CCD; 10~300mm focus; C interface
Power Supply	
Voltage	127V ± 10% AC
Current	0.5 A
Others	
Optional	Dust Wiper; Preset Positioning

CORROSION-PROOF EQUIPMENT SERIES CORROSION-PROOF CAMERA HOUSING



FST-12631B6/FST-12630B6



FST-CP31B6/FST-CP30B6

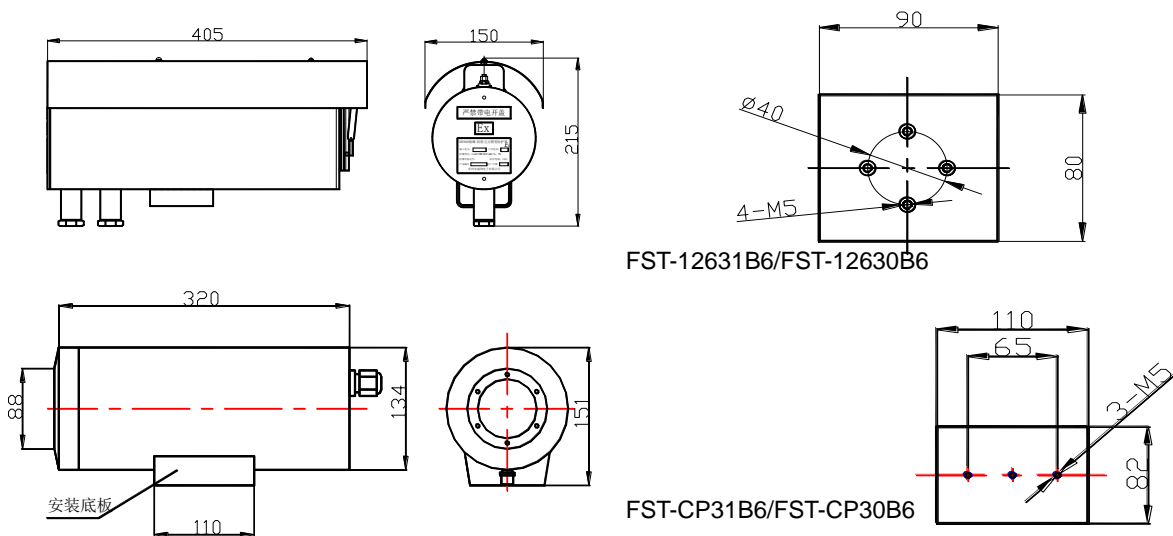
DESCRIPTION

Corrosion-proof Camera Housing is designed to withstand extremely adverse environment filled with a variety of acid, alkali and dust etc.. It accommodates most camera / lens combinations with optional sunshield, wiper and heater etc., after all of which are assembled, it could conduct functions of real-time video transmission and on-the-spot scanning, real-time video storage and remote on-line transmission etc..

PRODUCT FEATURES

- In accordance with IP68
- 316L、316、304 construction optional
- Optional sunshield, wiper, sight glass defroster and heating function
- Applicable to all extremely adverse environment such as acid, alkali and dust
- Unit weight 5kg/2kg
- Indoor / Outdoor applications
- FST-12631B6/FST-12630B6 is equipped with wiper to keep the glass clean.

OUTLINE DIMENSION AND INSTALLATION DRAWING



TECHNICAL DATA

	Model	FST-12631B6/FST-12630B6	FST-CP31B6/FST-CP30B6
Basic Parameter	Manufacturers Standard	Enterprise Standard	
	Configuration Mode	Front and rear caps with threaded flameproof joints and silastic gasket ring	
	Explosion-proof mode	IP68	
	Operating environment	Places with corrosive air or substance such as acid and alkali	
	Operating temperature	-25°~60°C _{note1}	
	Relative Humidity	≤95% (+25°C)	
	Cable entries	2 corrosion-proof cable entries, inner hole dia.φ10	
Mechanical Features	Construction	304、316、316L stainless steel	
	Wiper	Inside	No
	Wiper's rotate speed	1 r/s	No
	Electric motor	Permanent-magnet D.C. motor decelerates with gear	No
	Transmission structure	Lubricated all-wheel inner parts	No
	Sight glass dimensions	φ75 mm	
	Dimensions (L×W×H)	405×150×215 mm	320×134×151 mm
	Inside dimensions	φ125×330 mm	φ100×280 mm
	Weight	5 kg	2 kg
Built-in Controller	Controlling Device	AVR singlechip with RSIC kernel	No
	Controlling Interface	Switch signal	No
	Voltage	12 V DC	No
	Current	300 A	No
Power Supply	Voltage	12V DC/24V DC/220V AC	
	Current	1A /0.5A /0.1A	
Others	Sunshield	Fitted as standard	Optional
	Built-in Power supply module	Optional	
	Inner heating		
	Cable requirement	Power supply: 2X1.0 mm ² (24V DC) / 2x0.75 mm ² (220V AC) Communication: Shield 2X0.75 mm ² Video: 75Ω	

Note1: Minimum temperature reaches -45°C after heater is used.

Actual index is in accordance with instruction book. Products design and specifications subject to change without notice.

HIGH-TEMPERATURE RESISTANT EQUIPEMTN SERIES WATER-COOLED CAMERA HOUSING



FST-WC31B6/FST-WC30B6111



FST-WCD31B6/FST-WCD30B6

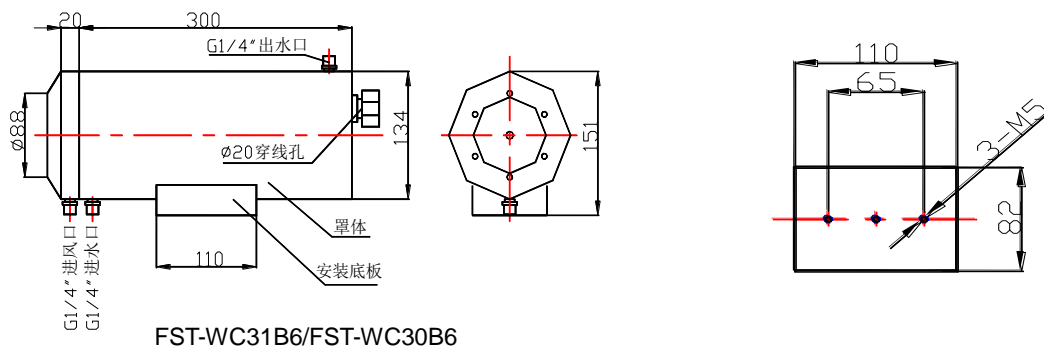
DESCRIPTION

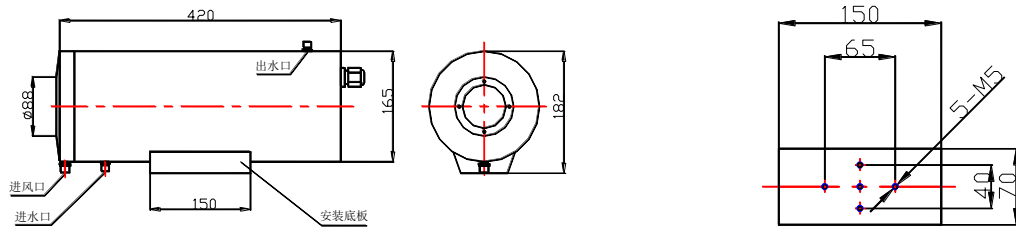
FST-WC31B6/FST-WC30B6/FST-WCD31B6/FST-WCD30B6 Water-cooled Camera Housing is made of dual-layer stainless steel, which achieves cooling by cooling water from interlayer. Its front cap prevents dust by compressing air to form damp sheet. With good corrosion-proof performance, it could be used in the environment with high temperature, large amount of dust and corrosive gas. This kind of product has been widely applied to industries of steel、cement and electrical power for improving production efficiency and working conditions and reducing labor intensity.

PRODUCT FEATURES

- Cooling high-temperature environment ($\leq 250^{\circ}\text{C}$) to guarantee camera's regular work
- 316L、316、304 stainless steel optional
- In accordance with IP68 to satisfy the operating needs for extremely adverse environment Housing allows for installation of all kinds of CCD cameras. Unit weight 4Kg/8Kg
- To operate in coordination with airpump, hydraulic pump, oily water separator and high-temperature-proof covering

OUTLINE DIMENSION AND INSTALLATION DRAWING





FST-WCD31B6/FST-WCD30B6

MOUNTING DIMENTIONAL DRAWING

TECHNICAL DATA

Model		FST-WC31B6/FST-WC30B6	FST-WCD31B6/FST-WCD30B6
Basic Parameter	Manufacturers Standard	Enterprise Standard	
	Configuration Mode	Dual-layer stainless steel	
	IP	IP68	
	Cable entries	2 water-proof cable entries , inner hole Dia.φ10	
	Water inlet / outlet	G1 / 4"	G1 / 2"
	Dust removal window interface	G1 / 4"	
Mechanical Features	Material	304、316、316L stainless steel	
	Sight glass dimensions	φ65 mm	φ8 mm
	Dimensions (L×W×H)	300×134×151 mm	420×105×182 mm
	Inside dimensions	φ100×280 mm	φ140×320 mm
	Weight	4 kg	8 kg
Operational Requirement	Operating environment	Applicable to high-temperature、dust and heated splashing material (slag、liquid iron etc.)	
	Operating temperature	0°~+250°C	
	Relative Humidity	≤80% (40°C)	
	Atmosphere pressure	86 Kpa ~106 Kpa	
	Dust concentration	≤200 mg / m ³ (take cement dust as standard)	
	Inlet water temperature	≤35°C	
	Flow	0.3 L/s ~0.6 L/s	
	Inlet hydraulic pressure	0.1 Mpa	
	Air-compression pressure	0.1~0.4 Mpa	
Power Supply	Voltage	24V DC/220V AC	
	Current	2 A / 0.5 A	
Others	Built-in power supply module	Optional	
	Cable requirement	High-temperature-proof cable、shield (function: power supply 2×1.0 mm ² 、signal 2×0.75 mm ² 、video75Ω	

Actual index is in accordance with instruction book. Products design and specifications subject to change

without notice.

WIND-COOLED CAMERA HOUSING



FST-WND31B6/FST-WND30B6



FST-WNP31B6/FST-WNP30B6

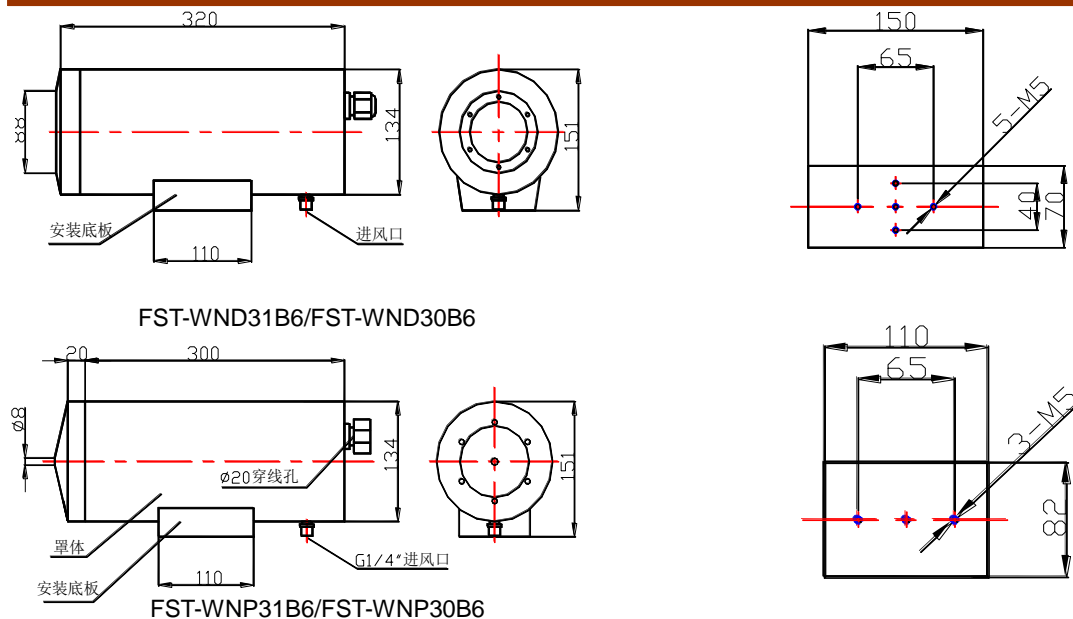
DESCRIPTION

FST-WND31B6/FST-WND30B6/FST-WNP31B6/FST-WNP30B6 Wind-cooled Camera Housing is made of stainless steel with good corrosion-proof performance. FST-WNP31B6/FST-WNP30B6 wind-cooled camera housing's end closure is designed in accordance with pinhole lens. Set on the rear cover board, all the lines connects plastics-wrapped tube and pipe to achieve protection. This kind of product has been widely applied to industries of metallurgy、electrical power、glass and building material etc..

PRODUCT FEATURES

- Cooling high-temperature environment ($\leq 250^{\circ}\text{C}$) to guarantee camera's regular work
- 316L、316、304 stainless steel optional
- In accordance with IP68 to satisfy the operating needs for extremely adverse environment
- Housing allows for installation of all kinds of CCD cameras. Unit weight 3Kg/4Kg
- To operate in coordination with air pump, hydraulic pump, oily water separator and high-temperature-proof covering

OUTLINE DIMENSION AND INSTALLATION DRAWING



TECHNICAL DATA

	Model	FST-WND31B6/FST-WND30B6	FST-WNP31B6/FST-WNP30B6
Basic Parameter	Manufacturers Standard	Enterprise standard	
	Configuration Mode	Dual-layer stainless steel	
	IP	IP68	
	Cable entries	2 water-proof cable entries , inner hole Dia.φ10	
	Air entry	G1/4"	
Mechanical Features	Construction	304、316、316L stainless steel	
	Sight glass dimensions	φ65 mm	φ8 mm
	Dimensions (L×W×H)	320×134×151 mm	300×134×151 mm
	Inside dimensions	φ100×280 mm	
	Weight	3 kg	4 kg
Operational Requirement	Operating environment	Applicable to high-temperature、 dust and heated splashing material (slag、 liquid iron etc.)	
	Operating temperature	≤80℃	≤150℃
	Relative Humidity	≤80% (40℃)	
	Atmosphere pressure	86 Kpa ~106 Kpa	
	Dust concentration	≤200 mg / m ³ (take cement dust as standard)	
	Inlet Air-compression temperature	≤35℃	
	Flow of air	0.3 L/s ~0.6 L/s	
	Air-compression pressure	0.1 L/s ~0.6 L/s	
	Power Supply	Voltage	24V DC/220V AC
	Current	2 A / 0.5 A	
Others	Built-in Power supply module	Optional	
	Cable requirement	High-temperature-proof cable、 shield (function: power supply 2×1.0 mm ² 、 signal 2×0.75 mm ² 、 video75Ω	

Actual index is in accordance with instruction book. Products design and specifications subject to change

without notice.

Bracket Products

PAN/TILT MOUNTING BRACKET FST-EBAB6/FST-EBA30B6/FST-EBA31B6

SPECIFICATIONS:

Model : FST-EBAB6/FST-EBA30B6/FST-EBA31B6

Construction : carbon steel / Stainless steel

Load weight 80Kg

Dead weight : 5.5Kg



EXPLOSION-PROOF HOUSING MOUNTING BRACKET FST-EBBB6/FST-EBB30B6/FST-EBB31B6

SPECIFICATIONS:

Model : FST-EBBB6/FST-EBB30B6/FST-EBB31B6

Construction : carbon steel / Stainless steel

Application : Applicable to FST-CPB31B6/FST-CPB30B6

Upset direction : adjustable

Load weight : 30Kg

Dead weight : 3Kg



EXPLOSION-PROOF HOUSING MOUNTING BRACKET FST-EBCB6/FST-EB30B6/FST-EB31B6

SPECIFICATIONS:

Model : FST-EBCB6/FST-EB30B6/FST-EB31B6

Construction : carbon steel / Stainless steel

Application : Applicable to FST-CPR31B6/FST-CPR30B6/FST-100SHB6

Upset direction : adjustable

Load weight : 21Kg

Dead weight : 1.5Kg



FST-EBR31B6/FST-EBR30B6 INTEGRATED CAMERA MOUNTING BRACKET

SPECIFICATIONS:

Model : FST-EBR31B6/FST-EBR30B6

Construction : Carbon steel / Stainless steel

Application : Applicable to FST-R3126B6 / FST-R3026B6 / FST-RD3126B6 /
FST-RD3026B6

Load weight : 50Kg

Dead weight : 2.6Kg



FST-EBTCB6/FST-EBT30B6/FST-EBT31B6 EXPLOSION-PROOF HOUSING MOUNTING BRACKET

SPECIFICATIONS:

Model : FST-EBTCB6/FST-EBT30B6/FST-EBT31B6

Construction : carbon steel / Stainless steel

Application: Applicable to

FST-CPR31B6/FST-CPR30B6/FST-1831HB6 /

FST-1830HB6/FST-CPA31B6/FST-CPA30B6/

FST-CPS31B6/FST-CPS30B6/ Series Ex-housing

Upset direction : adjustable

Load weight : 20Kg

Dead weight : 1.5Kg



FST-EBRS30B6/FST-EBRS31B6 PAN/TILT MOUNTING BRACKET

SPECIFICATIONS:

Model : FST-EBRS30B6/FST-EBRS31B6

Construction : Carbon steel / Stainless steel

Application : Applicable to FST-RB31B6/FST-RB30B6

Pan/Tilt

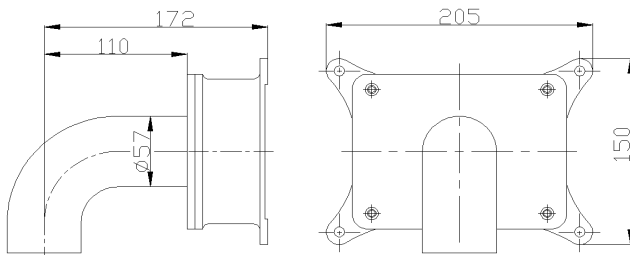
Upset direction : adjustable

Load weight : 50Kg

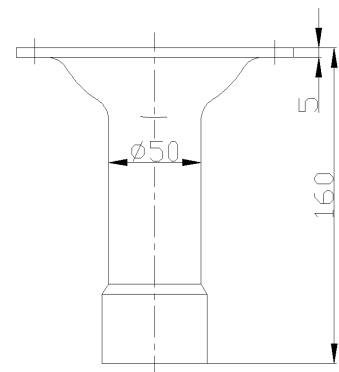
Dead weight : 3Kg



EXPLOSION-PROOF HIGH-SPEED DOME CAMERA BRACKET



FST-B30WB6 Wall Mount Bracket



FST-B30CB6 Ceiling Mount Bracket

SYSTEM DIRECTION

Based on safe production and management, observation system for safe production engineering plays an important part in operational monitoring, safety management, risk forecast etc.. Meanwhile it could construct a higher degree of network monitoring center (such as group) and form group's first-class monitoring network for safety in production so as to help different departments and leaders get to know the condition of production and safety anytime as well as do overall analysis to make sure the realization of source sharing.

Front side

Front side includes different kinds of subsystem. The monitoring subsystem covers camera, decoder, pan/tilt, optical transceiver and alarm input device etc., which are chosen according to different users and environment.

communication subsystem

Common industrial phone, amplifier talk-back industrial phone, remote control host computer, and tabletop telephone etc. are included to meet the demands of point-point and point-points amplifier calls.

safety monitoring subsystem

It includes gas sensor, airy COTS etc.. Various real time parameters are shown by monitoring host computer.

monitoring center

It includes on-the-spot monitoring center and group monitoring center and is mainly composed of matrix、 monitoring server、 network switches、 host computer for monitoring consumers、 optical transceiver for host control and PPD or screen wall etc..

It is used for receiving and displaying on-the-spot pictures, switch control for different signal as well as signal display on screen wall etc..The monitoring server could control hundreds of on-line users simultaneously and support special client-side monitoring or WEB browse display with functions of perfect record, retrieval and backups.

PDP/DPL large-screen TV could momentarily display on-the-spot pictures and a variety of graph data, providing more intuitionistic and perfect human-computer interface for operation control.

Comprehensive monitoring network of all subsystem could efficiently make exact and timely early warning prompt and technical guard before accident happens.