

## Wi-Fi Night Vision Cube IP camera

Automatic settings - DIY IP camera



ONVIF 

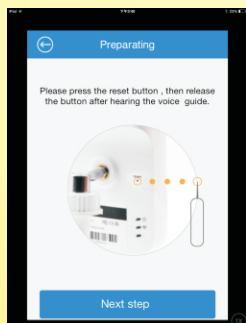
### FEATURES:

- Wi-Fi Camera, no cables, convenient to place where you want
- Cloud Technology P2P or Auto ID
- Support SD card, Up to 32Gb
- Support remote view on iOS and Android Phone, Pad and PC
- With E-mail alarm Function can sent photo or video
- Support motion detection and Alarm notification
- Built-in microphone and speaker for two-way audio
- Easiest settings, Camera is set automaticall by Sound Wave
- Privacy masking, Multiple stream, camera Audio commands
- Plug and Play, DIY complete device.

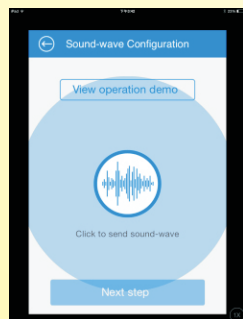


### 3 Easy automatic steps to set the camera with your mobile phone or pad:

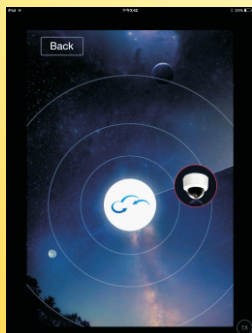
**Step 1- Press the reset button at the camera back**



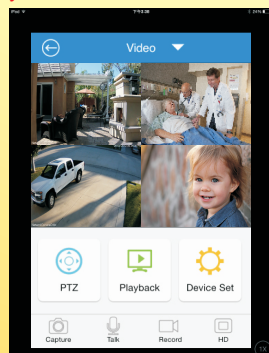
**Step 2- Search the camera using soundwaves**



**Step 3- Add the Camera when the system scan automatically find it:**

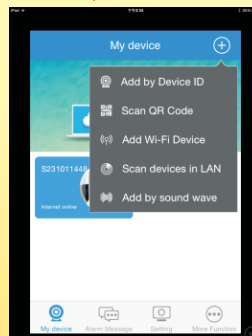


View up to 9ch at the same time, Playback and PTZ Control:



FST-DYN20		
Display	Image Sensor	1/4" CMOS
	Image Resolution	1280×720
	Effective Pixel	1MP
Lens	Compression Rate	H.264/JPEG
	Frame Rage	25 frame(720p), 30 frame(VGA)
	Stream Rate	64Kbps~8Mbps
	Mini Illumination	0Lux(IR ON)
	Mount	M12
Function	Focal Length	3.6mm (AOV 71°)
	Iris	Fixed
	Privacy masking	4 zones
	Shutter control	Auto
	AGC	Auto
	White Balance	Auto
	Day/Night	ICR light filter switch/ Color/ B/W
Video Adjust	Hue/ Brightness/ contrast/ H/V mirror	

Cameras can be added in different ways, device ID, QR code, Scan, sound wave, Wi-fi:



Complete ans easy camera and alarm settings:

